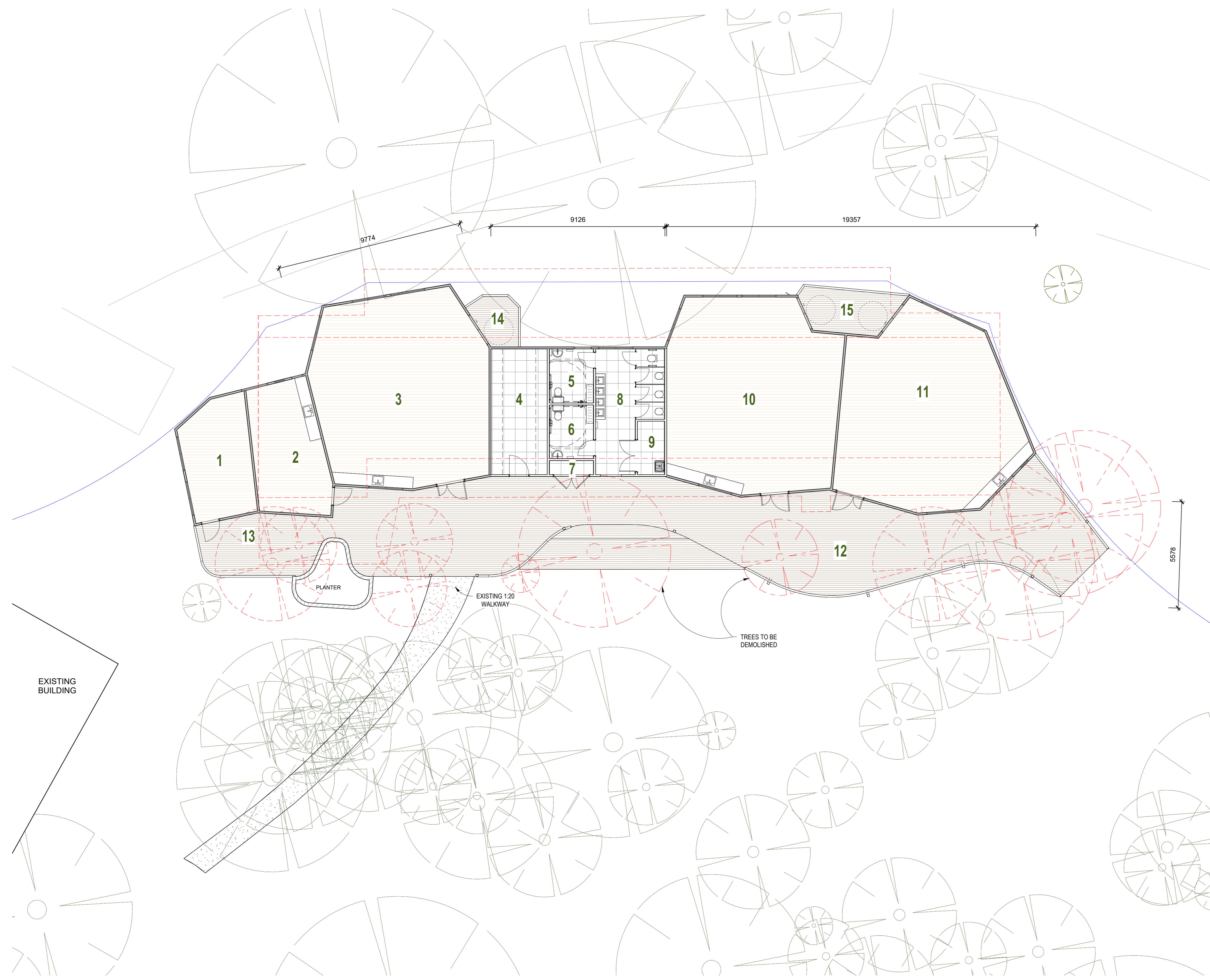


Room Schedule		
No.	Name	Area
1	Learning Support withdrawal	21 m ²
2	Learning Support activity room	25 m ²
3	Class 3	85 m ²
4	Storage	19 m ²
5	Student WC	7 m ²
6	Staff WC	6 m ²
7	Elec/Comms	2 m ²
8	Unisex Toilets	19 m ²
9	Cleaners	4 m ²
10	Class 4	85 m ²
11	Class 5	85 m ²
12	Verandah	162 m ²
13	Withdrawal deck	20 m ²
14	Class 3 COLA	6 m ²
15	Class 4/5 COLA	11 m ²
Grand total: 15		558 m ²

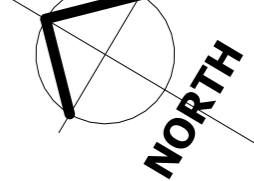


EXISTING BUILDING

PLANTER

EXISTING 1:20 WALKWAY

TREES TO BE DEMOLISHED



PRELIMINARY ONLY NOT FOR CONSTRUCTION

No.	Revision	Date
11B Garnet Street Cooroy QLD 4563 andrew@wdarchitects.com.au www.wdarchitects.com.au 0448 870 791		
PRIMARY SCHOOL REPLACEMENT Noosa Pengari Steiner School 86 Nyell Road, Doonan		
FLOOR PLAN		
Drawn by	ML	Scale @ A1 1:100
Checked by	AW Project No. 543H	Date 22.02.23
Approved By	A350	Revision

The design illustrated in these documents is the exclusive property of Webb Duffy Pty Ltd. ACN 126 306 643 trading as WD Architects and must not be reproduced, or used in whole or in part without the expressed written permission of WD Architects.